

SOFTWARE RELEASE NOTE:

COMM-BOX / COMM-BOX Plus POULTRY/PIGS Ver. 4.7.4.21



Summary

This release includes:

- Support for Platinum Ver. X.27 (Advanced Feeding, Egg Flats, Basic Breeder fix weighing) candidate
- Support for Bird Inventory of 140,000 Birds, Platinum Pro/Touch (8275)
- Support for hourly water consumption (7238) (Appendix B)
- Support for Comparison screen settings Colors (8345)
- Support for Select All Houses checkbox and Growth Day at Send-to-All (Appendix C)
- Support for Modal tool to shift temperature differentials (Appendix D)
- Support for Push Notification settings at Commbox (Appendix E)
- Support for Farm Info search (4897)
- Support for Farm view by grid or list method (Appendix F)
- Support for large size Excel history file export
- Change in Additional Users Invite flow (9859)
- Support for Farm Registration by Owner
- Improvement on:
 - Date and Time Setup
 - Internet Speed test
 - FTP Upload process (including M-Tech)
 - Minimum Ventilation by weight settings update
 - Proper value presentation of Low and High fields in OptiZone table
 - Proper temperature readings value presentation in OptiZone Status HotKey
 - OptiZone "OFF Temp" resetting to zero value, when setting 0.0 to "ON Temp" temperature in the OptiZone table
 - Units type modification saving in User Settings
 - Temperature settings synchronization between the TAB "Opti Zone" and the TAB Set Points"
 - Proper "Non-Brood/Brood" Group presentation in HotKey "Opti Zone
 - Control Mode Cooling Ramping settings
 - Expansion box relays presentation (3884)
 - The males weights presentation in the graph (3954)
 - Low/High Current Sense per Relay Alarm notification (6119)
 - Vent Column presentation in Levels Of Ventilation table
 - WOD alarm settings presentation (8168)
 - Superguard controllers rescan after communication loss (9111)

Munters Israel

18 Hasivim st. , Petach Tikva 4959376, Israel / Phone: +972 3 920 6200 / Fax: +972 3 924 9834
info@munters.co.il / www.munters.com

- Water & Feed and Vent table presentation (8204)
- Light table presentation for "light feed" and "light no feed" options (9650)
- Hebrew UI (8344)
- Water consumption presentation at WEB (9863)
- Light Table and Feed Table presentation within Platinum Version 5.18 (9838)
- Water consumption presentation at WEB (9863)
- Light Table and Feed Table presentation within Platinum Version 5.18 (9838)

Known Anomalies

Description	Workaround
In the table "Analog Output Installation" we get "Zone Inlet Open" instead "Zone Inlet"	Refer as "Zone Inlet"
In Nipple Flushing table missing a parameter "Water Temperature"	View/Modify a parameter "Water Temperature" through the controller UI
Relays/Switch info is not correct at Hardware Checklist	Check proper info at controller itself
Table Control Mode Set parameters - get the message "Couldn't retrieve data from controller"	Control Mode Set Parameters doesn't retrieve, still could be set at the Controller
Table "Feed Scale Program" in Platinum Breeder Advanced Mode SW Ver. 6/7.24 and lower is not presented properly	View/Modify settings manually at controller

Release Specifications:

Product Name	Comm-Box Poultry/Pigs
Software Version	4.7.4.21
Supported Hardware	Comm-Box / Comm-Box Plus
Communication Software	NA
Release Date	17-Jun-25
Supported Controllers	See Appendix A
Supported Languages	See Appendix A

Appendix A: Supported Controllers and Languages

<u>Software</u>	<u>Languages</u>	<u>Product</u>	<u>Version</u>
Commbbox 4.7.4.21 – Poultry	English	Platinum 5.x	5/6/7.12
	Chinese	Platinum Pro 6.x	5/6/7.14
	Spanish	Platinum Touch, Rotem One 7.x	5/6/7.17
	Portuguese	Broiler + Breeder + Layers	5/6/7.18
	Russian		5/6/7.19, 5.19.06
	Hebrew		6/7.20
	Arab		6/7.22
	Korean		6/7.22
	Italian		6/7.23
			6/7.24
			6/7.27 - Candidate
		AC-2000 3G	9.12
		Broiler	9.14
			9.17
			9.18
			9.19
		AC2000 Plus and SE	8.11 Broiler
		Broiler + Breeder	8.11 Breeder
		RSW-2 GP/Broiler	7.02
			7.03
		Smart 8C/10D	2.06

<u>Software</u>	<u>Language</u>	<u>Product</u>	<u>Version</u>
Commbbox 4.7.4.21 – Pigs	English	Platinum 5.x	5/6/7.12
	Chinese	Platinum Pro 6.x	5/6/7.14
	Spanish	Platinum Touch, Rotem One 7.x	5/6/7.17
	Portuguese	Pigs	5/6/7.18
	Russian		5/6/7.19
	Korean		6/7.20
	Italian		6/7.22
			6/7.22
			6/7.23
			6/7.24
		AC2000 Plus and SE Pigs	8.11
		RSW-2 GP	7.02
		Superguard Plus WEB Piguard Plus 80/81/82 WEB	2.11
		Superguard WEB Piguard 80 WEB	2.11
		Element	Element 1.03
			Element 1.04
		Smart 8C/10D	2.06

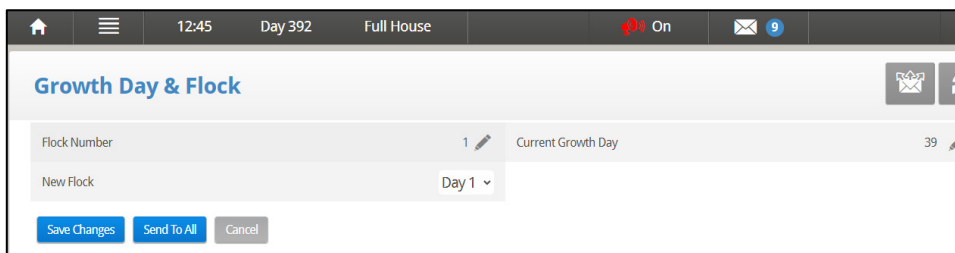
Appendix B: Support for hourly water consumption

Version 4.7.2 supports displaying the Total Water Per Hour

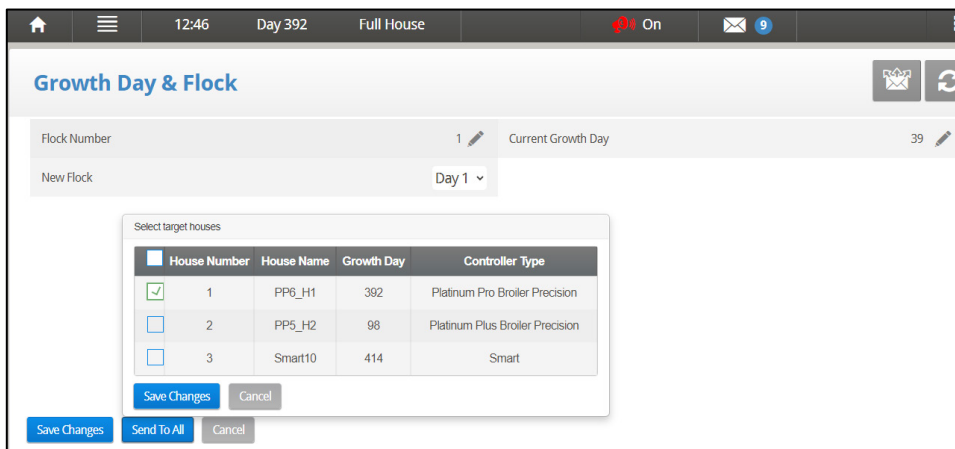
Munters Win.X64.T1 Customize Ben 8								
Comparison	House	House 1	House 2	House 3	House 4	House 5	House 6	House 7
	Outside Temperature	11.2 C°	11.2 C°	11.2 C°	11.2 C°	11.2 C°	11.2 C°	11.2 C°
House 1	Vent. Mode	Minimum Vent.	Minimum Vent.	Minimum Vent.	Minimum Vent.	Minimum Vent.	Minimum Vent.	Minimum Vent.
House 2	Vent. Level	1630	1630	1630	1630	1630	1630	1630
House 3	Vent. Level CFM	152,910	152,910	152,910	152,910	152,910	152,910	152,910
House 4	Status	Off	Off	Off	Off	Off	Off	Off
House 5	Cycle Time	135	120	119	119	117	143	141
House 6	Set Temperature	26.0 C°	26.0 C°	26.0 C°	26.0 C°	26.0 C°	26.0 C°	26.0 C°
House 7	Target Pressure	29	29	29	29	29	29	29
House 8	Humidity Treatment	Off	950	Off	Off	Off	Off	Off
	Daily Water	22772	22778	22778	22779	22779	22769	22770
	Total Water Per Hour	949	950	950	950	950	948	948
	Average Weight	0.000	0.000	0.000	0.000	0.000	0.000	0.000

Appendix C: Support for Growth Day at Send-to-All

1. Go to Management > Growth Day & Flock.



2. Edit as required and click **Send to All**.



House Number	House Name	Growth Day	Controller Type	
<input checked="" type="checkbox"/>	1	PP6_H1	392	Platinum Pro Broiler Precision
<input type="checkbox"/>	2	PP5_H2	98	Platinum Plus Broiler Precision
<input type="checkbox"/>	3	Smart10	414	Smart

2. Select the houses in which the change applies and click **Save Changes**.

Munters Israel

18 Hasivim st. , Petach Tikva 4959376, Israel / Phone: +972 3 920 6200 / Fax: +972 3 924 9834
 info@munters.co.il / www.munters.com

3. Click the edit icon



. The Set Level of Ventilation screen appears.

Set Level of Ventilation

From Level

To Level

Change

4. Define the levels at which the differential is changed and the differential.

Note: The first several levels normally have differential temperatures set to 0.

Set Level of Ventilation

From Level

To Level

Change

The changes appear on the Levels of Ventilation screen.

Levels Of Ventilation									
Exhaust & Tunnel Fans		Vent & Curtain		Variable Speed Fans		Stir & Variable Stir Fans			
Level	On (Sec.)	Air Capacity	Diff.	Tunnel Level	Exhaust		Tunnel		
					E1	E2	T1	T2	
1	30	2,039	0.0	<input type="checkbox"/>		X	X	X	
2	45	3,058	0.0	<input type="checkbox"/>		X	X	X	
3	60	4,078	0.0	<input type="checkbox"/>		X	X	X	
4	30	6,626	2.0	<input type="checkbox"/>		X		X	
5	45	9,939	2.0	<input type="checkbox"/>		X		X	
6	60	13,253	2.0	<input type="checkbox"/>		X		X	
7	0	0	0.0	<input type="checkbox"/>	X	X	X	X	

At levels 4, 5, and 6 ventilation goes to the next level when the temperature is 2 degrees about the tunnel or target temperature (depending on if the level is below or above the tunnel level. Refer to the Platinum manuals for details).

Appendix E: Support for Push Notification settings

CommBox Ver. 4.7.2 can send push notifications to multiple email addresses. These emails list any current alarms.



- This function appears both for local and web access connections..

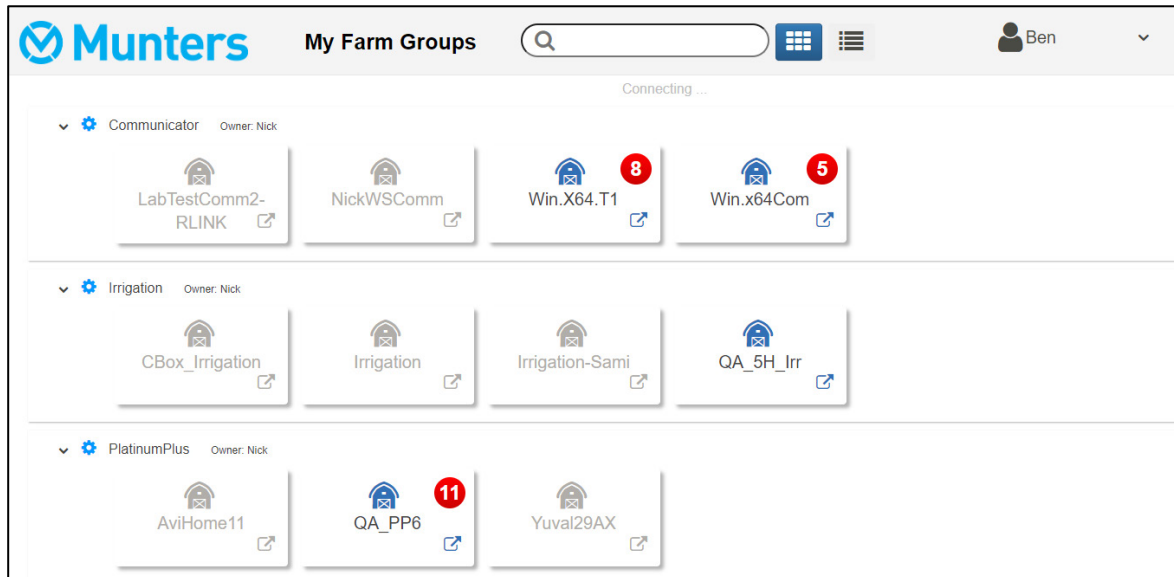
Farm settings
 Push Notifications
 Local Users
 Data Collect
 Activity log

Enable Push Notifications ☒ On

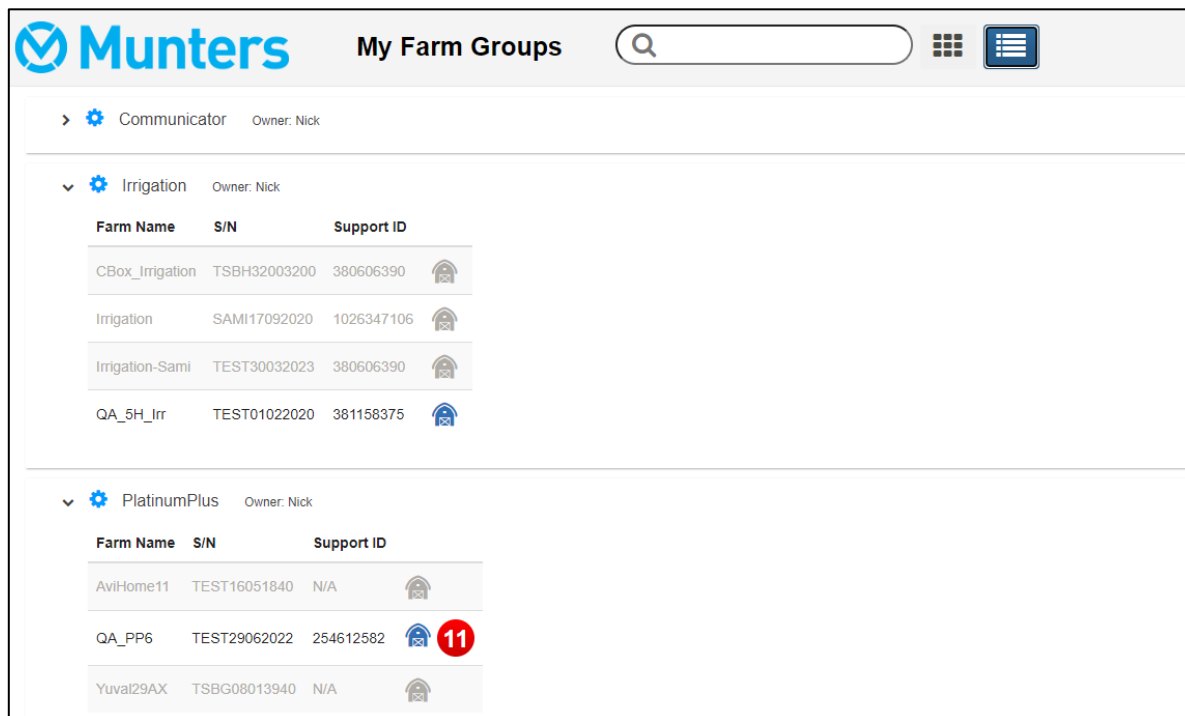
Email
 Name

Appendix F: Support for Farm view by grid or list method

Farms can be displayed in a grid (click ) or in a list (click )



Grid View



List View

Munters Israel

18 Hasivim st. , Petach Tikva 4959376, Israel / Phone: +972 3 920 6200 / Fax: +972 3 924 9834
info@munters.co.il / www.munters.com

Appendix G: Data Collection

NOTE Use the Centralized Collection function only after consulting with Munters technical support.

- Only the group owner or administrator can define the General Settings. The following tab does appear on any other user's screen.
- The General Settings page is an option. If data upload is to a local server only, leave these fields blank and go to Defining the FTP/SFTP server.
- The General Settings tab is viewable via the web only. It is not viewable from a local connection.

1. In the settings icon, select Farm Settings.

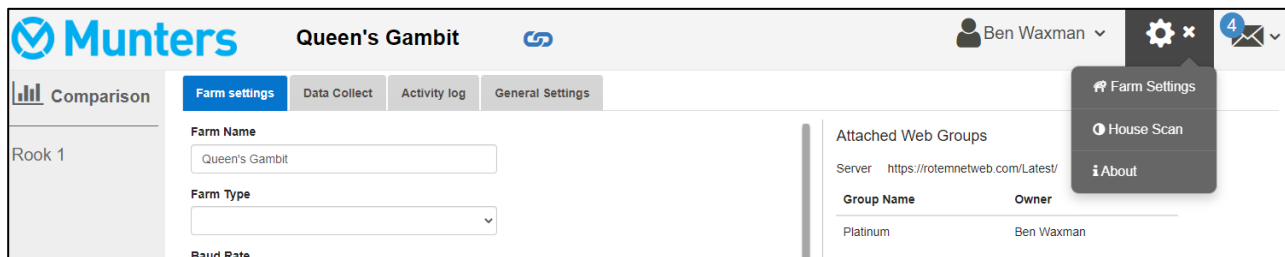


Figure 1: Farm Settings Drop Down

2. Go to Farm Settings > General Settings.

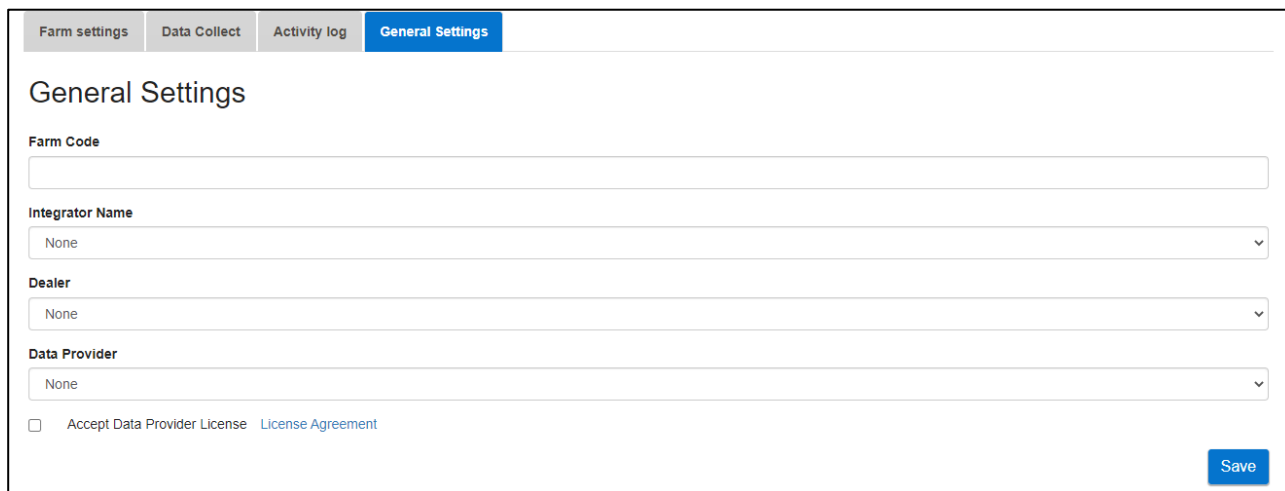


Figure 2: General Settings Screen

3. Enter the data as follows:

- Farm Code: This is a code provided by the integrator used to identify the farm.
- Integrator Name: From the drop-down list, select the required name.
- Dealer: From the drop-down list, select the required dealer name.
- Data Provider: From the drop-down list, select the required data provider.

Munters Israel

18 Hasivim st. , Petach Tikva 4959376, Israel / Phone: +972 3 920 6200 / Fax: +972 3 924 9834
 info@munters.co.il / www.munters.com

- Accept Data Provider License. Mark this box. This box must be checked to enable centralized data collection.

4. Click **Save**.

General Settings

Farm Code
1234

Integrator Name
Other

Dealer
Other

Data Provider
Other

☐ Accept Data Provider License [License Agreement](#)

Save

Figure 3: General Settings – Completed (Example)

NOTE If you click Save without marking the License radio box, the following message appears:

General Settings

Dear User, You have edited the General Settings fields. To continue using the data upload services, you must click “Accept Data Provider License”. Click No to return to the page and check the box. Click Yes to continue.

Yes **No**

Figure 4: License Warning

- Click **No** to return to the page and accept the license.
- Click **Yes** if you do not wish to use the data upload services.

5. Click the **Data Collect** tab. Refer to the following section.