

Installation Manual

TRIO Trainer Unit



TRIO Trainer

Training Unit

Ag/MIS/UmGb-2818-08/21 Rev 1.0
P/N: 116855



TRIO Trainer Unit

Installation Manual

Rev 1.0, 01/2023

Product Software: N/A

This manual for use and maintenance is an integral part of the apparatus together with the attached technical documentation.

This document is destined for the user of the apparatus: it may not be reproduced in whole or in part, committed to computer memory as a file or delivered to third parties without the prior authorization of the assembler of the system.

Munters reserves the right to effect modifications to the apparatus in accordance with technical and legal developments.

Index

<i>Chapter</i>		<i>page</i>
1	INTRODUCTION	6
	1.1 Disclaimer.....	6
	1.2 Introduction	6
	1.3 Notes	6
2	SETTING THE DIPSWITCHES	7
3	MAPPING DEVICES	8
4	ANALOG PORT WIRING	11
5	WARRANTY	13

1 Introduction

1.1 Disclaimer

Munters reserves the right to make alterations to specifications, quantities, dimensions etc. for production or other reasons, subsequent to publication. The information contained herein has been prepared by qualified experts within Munters. While we believe the information is accurate and complete, we make no warranty or representation for any particular purposes. The information is offered in good faith and with the understanding that any use of the units or accessories in breach of the directions and warnings in this document is at the sole discretion and risk of the user.

1.2 Introduction

Congratulations on your excellent choice of purchasing a TRIO Trainer!

In order to realize the full benefit from this product it is important that it is installed, commissioned and operated correctly. Before installation or using the controller, this manual should be studied carefully. It is also recommended that it is kept safely for future reference. The manual is intended as a reference for installation, commissioning and day-to-day operation of the Munters Controllers.

1.3 Notes

Date of release: August 2021

Munters cannot guarantee to inform users about the changes or to distribute new manuals to them.

All rights reserved. No part of this manual may be reproduced in any manner whatsoever without the expressed written permission of Munters. The contents of this manual are subject to change without notice.

1.4 User Manuals

Users wanting detailed information on the Trio functions can view or download users manuals at [this site](#).

2 Setting the Dipswitches

The unit comes wired. The only step needed is to define the dipswitches. The dipswitches define what type of device is wired to the S ports.

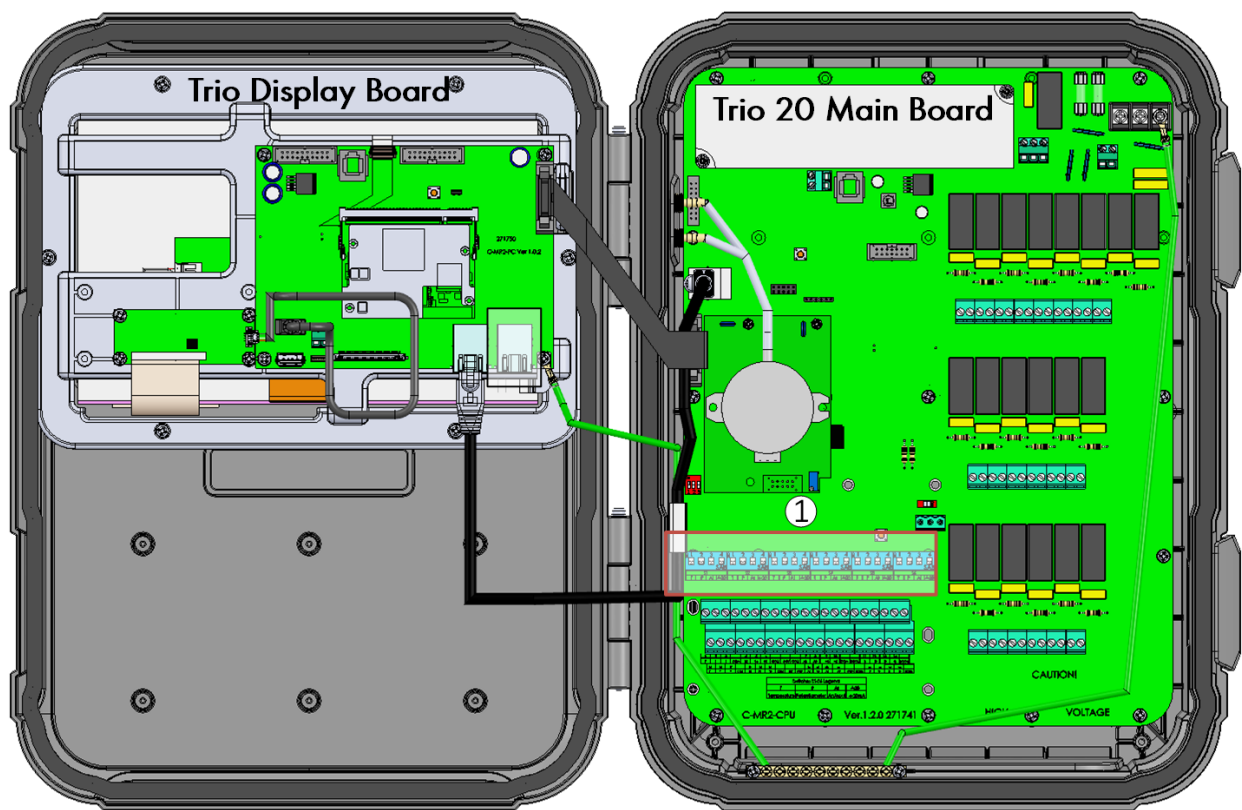


Figure 1: Board layout

1	Dipswitch location
---	--------------------

- On each S port (S1 – S6), lift dipswitch 3. Do not lift any other dipswitches!

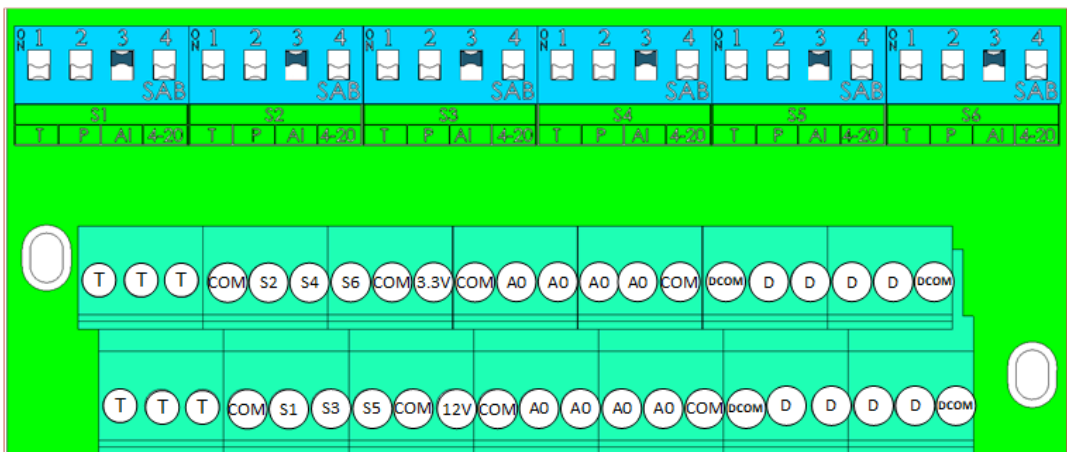


Figure 2: Dipswitches in place

3 Mapping Devices

To map the devices:

- 1. Go to System > Device and Sensors (Figure 3).

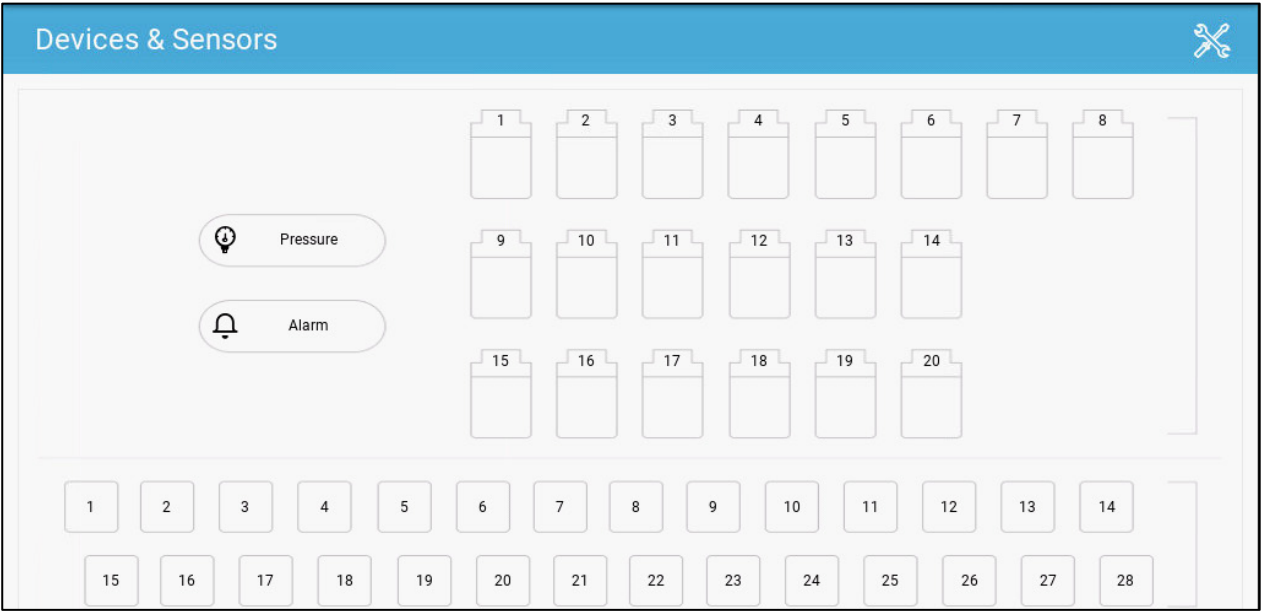


Figure 3: Undefined screen

This screen displays the relays and analog/digital ports. At this point all icons are undefined.

- 2. Click  Installation.

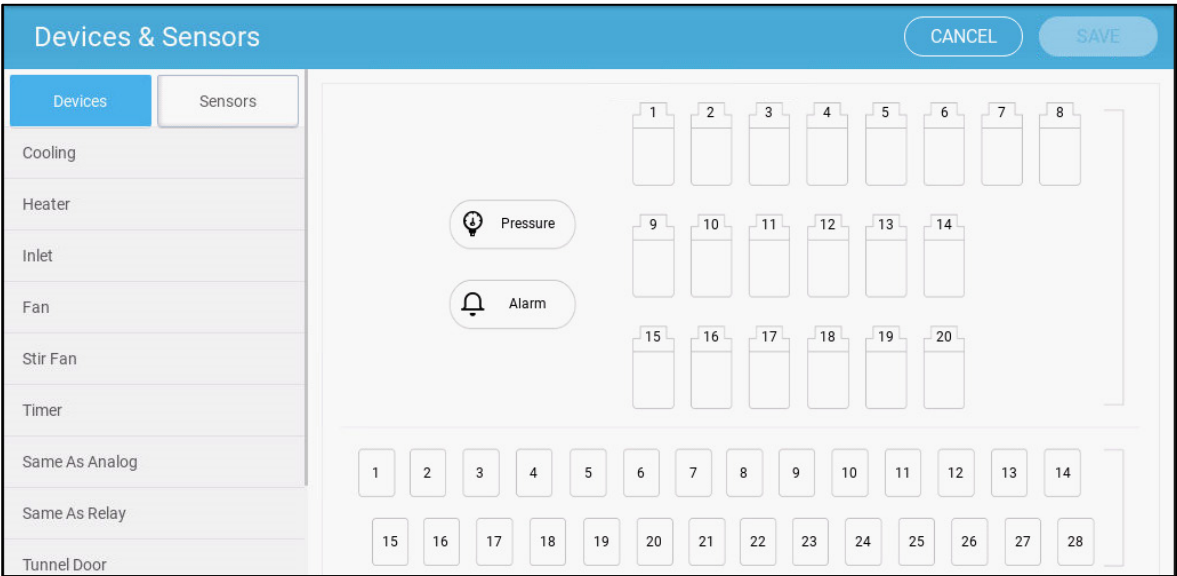


Figure 4: Sensors screen (a)

- Click **Sensors** to map auxiliary inputs, sensors (humidity, pressure, temperature, CO2, ammonia), water meter, and potentiometers.

3. Under Sensors, click the type of device that you want to map. In the following example, CO2 is selected. The screen displays the ports that can be defined as a CO2 sensor.

The screenshot shows the 'Devices & Sensors' interface. On the left, the 'Sensors' tab is active, showing a list of sensor types. 'CO2' is selected, indicated by a blue checkmark and '0 / 1' next to it. The main area displays a grid of 28 ports (1-28) arranged in three rows. Ports 4, 5, and 6 are highlighted in dark grey. To the right of the grid are two icons: 'Pressure' (light blue) and 'Alarm' (green). The top right has 'CANCEL' and 'SAVE' buttons.

Figure 5: Sensors screen (b)

4. Five ports are pre-wired. Define the corresponding analog ports as follows:

- Port 1: Temperature
- Port 2: Temperature
- Port 4: Humidity
- Port 5: Pressure
- Port 6: CO2

Devices & Sensors

→ Installation

CANCEL

SAVE

Devices

Sensors

Ammonia

Auxiliary Input

CO2

Feed Line

Feeder Active

Gas Meter

Humidity

Measuring Fan

Outside Humidity

1

2

3

4

5

6

7

8

9

10

11

12

13

14

15

16

17

18

19

20

15

16

17

18

19

20

21

22

23

24

25

26

27

28

Pressure

Alarm

1

2

3

RH 2

1

CO₂ 1

7

8

9

10

11

12

13

14

Figure 6: Defined screen

5. Click Save.

The TRIO Trainer comes with the analog ports wired to the control knobs found on the door. There is no need to adjust the wiring.

If at some time the wires become disconnected, the following illustrations show how to correctly place the wires.

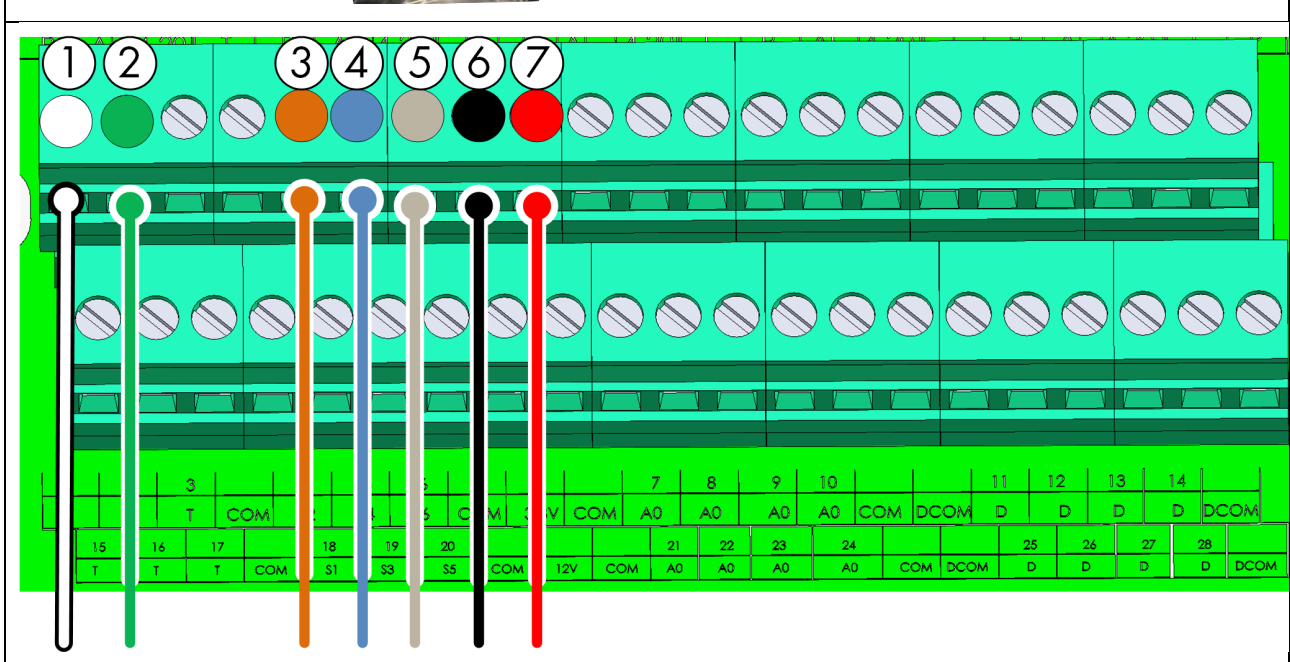


Figure 7: Analog port wiring and numbers (1)

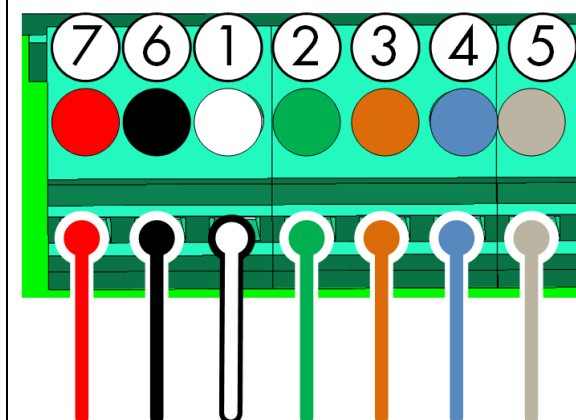


Figure 8: Analog port wiring and numbers (2)

Number	Color	Function
1	White	Temperature sensor
2	Green	Temperature sensor
3	Brown	Humidity sensor
4	Blue	Pressure sensor
5	Gray	CO2 sensor
6	Black	COM
7	Red	3.3 V

NOTE Make sure that the dipswitches are set properly! Refer to Figure 2.

5 Warranty

Warranty and technical assistance

Munters products are designed and built to provide reliable and satisfactory performance but cannot be guaranteed free of faults; although they are reliable products they can develop unforeseeable defects and the user must take this into account and arrange adequate emergency or alarm systems if failure to operate could cause damage to the articles for which the Munters plant was required: if this is not done, the user is fully responsible for the damage which they could suffer.

Munters extends this limited warranty to the first purchaser and guarantees its products to be free from defects originating in manufacture or materials for one year from the date of delivery, provided that suitable transport, storage, installation and maintenance terms are complied with. The warranty does not apply if the products have been repaired without express authorisation from Munters, or repaired in such a way that, in Munters' judgement, their performance and reliability have been impaired, or incorrectly installed, or subjected to improper use. The user accepts total responsibility for incorrect use of the products.

The warranty on products from outside suppliers fitted to the TRIO Trainer Unit, (for example antennas, power supplies, cables, etc.) is limited to the conditions stated by the supplier: all claims must be made in writing within eight days of the discovery of the defect and within 12 months of the delivery of the defective product. Munters has thirty days from the date of receipt in which to take action, and has the right to examine the product at the customer's premises or at its own plant (carriage cost to be borne by the customer).

Munters at its sole discretion has the option of replacing or repairing, free of charge, products which it considers defective, and will arrange for their despatch back to the customer carriage paid. In the case of faulty parts of small commercial value which are widely available (such as bolts, etc.) for urgent despatch, where the cost of carriage would exceed the value of the parts, Munters may authorise the customer exclusively to purchase the replacement parts locally; Munters will reimburse the value of the product at its cost price.

Munters will not be liable for costs incurred in demounting the defective part, or the time required to travel to site and the associated travel costs. No agent, employee or dealer is authorised to give any further guarantees or to accept any other liability on Munters' behalf in connection with other Munters products, except in writing with the signature of one of the Company's Managers.

WARNING: In the interests of improving the quality of its products and services, Munters reserves the right at any time and without prior notice to alter the specifications in this manual.

The liability of the manufacturer Munters ceases in the event of:

- dismantling the safety devices;

- use of unauthorised materials;
- inadequate maintenance;
- use of non-original spare parts and accessories.

Barring specific contractual terms, the following are directly at the user's expense:

- preparing installation sites;
- providing an electricity supply (including the protective equipotential bonding (PE) conductor, in accordance with CEI EN 60204-1, paragraph 8.2), for correctly connecting the equipment to the mains electricity supply;
- providing ancillary services appropriate to the requirements of the plant on the basis of the information supplied with regard to installation;
- tools and consumables required for fitting and installation;
- lubricants necessary for commissioning and maintenance.

It is mandatory to purchase and use only original spare parts or those recommended by the manufacturer.

Dismantling and assembly must be performed by qualified technicians and according to the manufacturer's instructions.

The use of non-original spare parts or incorrect assembly exonerates the manufacturer from all liability.

Requests for technical assistance and spare parts can be made directly to the nearest [Munters office](#).

